

A faint, light-colored world map is visible in the background of the slide, centered behind the main text.

Understanding the RCEP Trade in Goods & Tariff Finder

Ivy Heng
Assistant Director/ International Policy Engagement
Singapore Business Federation

26 October 2022

A world map with a light gray outline on a dark background. The region of the RCEP (Regional Comprehensive Economic Partnership) is highlighted in a light blue color. This region includes Southeast Asia, East Asia, and Oceania. A vertical orange line is positioned on the left side of the map, extending from the top to the bottom of the RCEP region. The text "Introducing RCEP's Trade in Goods" is centered over the map in white.

Introducing RCEP's Trade in Goods

Did you know? FTA helps to eliminate/ reduce

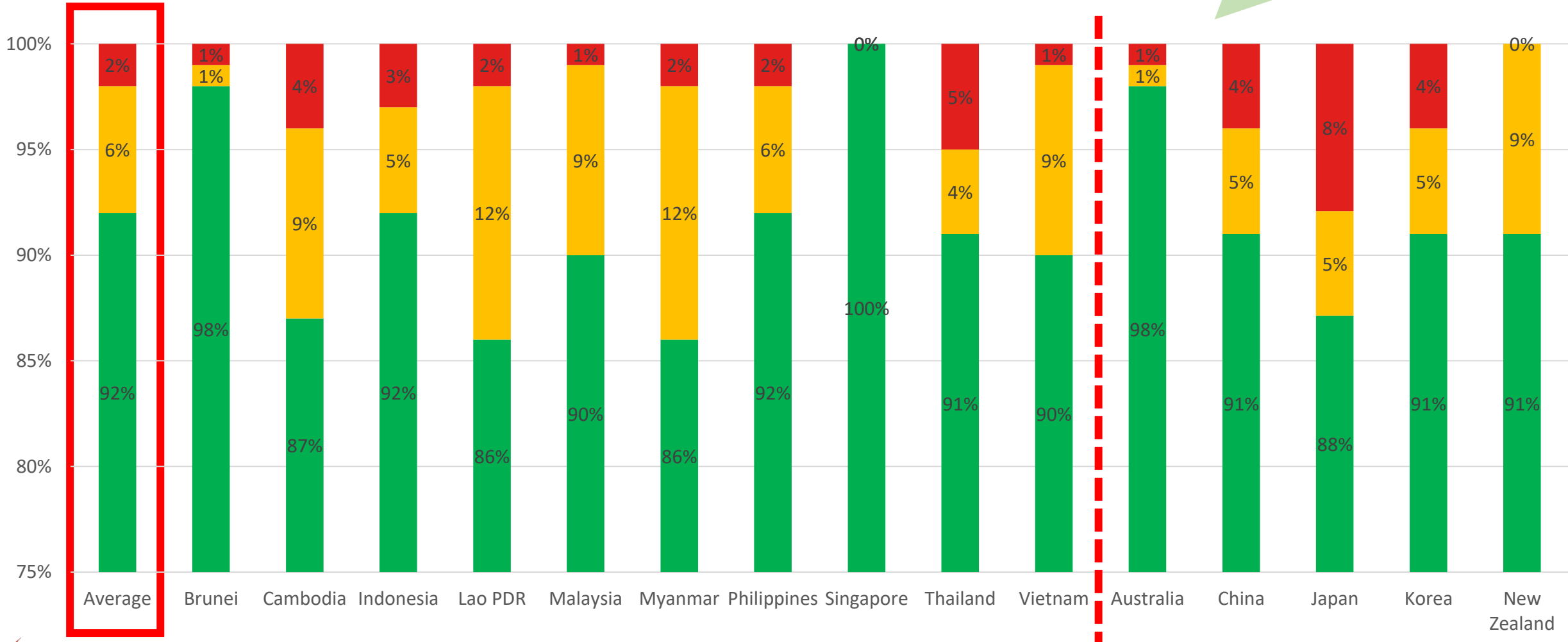
Sales Tax/
Value-
added Tax

Excise Tax

Import
Duty

Overview of Tariff Commitments

Indicative percentages. May differ from other sources.



Disciplines on Non-Tariff Measures (NTM) related Provisions

Horizontal consultation mechanism

Platform to request entering into consultations to address issues related to NTMs

Disciplines on Quantitative Restrictions

Additional transparency obligation on the need to notify and provide reasons for adoption of any export restrictions

Avenue for consultations with Parties that may be seriously affected by these measures

Disciplines on Import Licensing Procedures

Additional transparency obligations – i.e. need to notify additional conditions attached to application of import licenses

Specific time frames to extent possible:

- **30 days** to notify before new procedure or modification takes effect
- **60 days** to answer reasonable queries from Parties

Certainty on duty-free entry of certain goods

Temporary Admission of Goods

Duty-free entry of goods into customs territory of a RCEP Party meant for re-exportation **within a specific period**



Temporary Admission for Containers and Pallets

Duty-free entry of containers and pallets in use or to be used in shipment of goods in international traffic

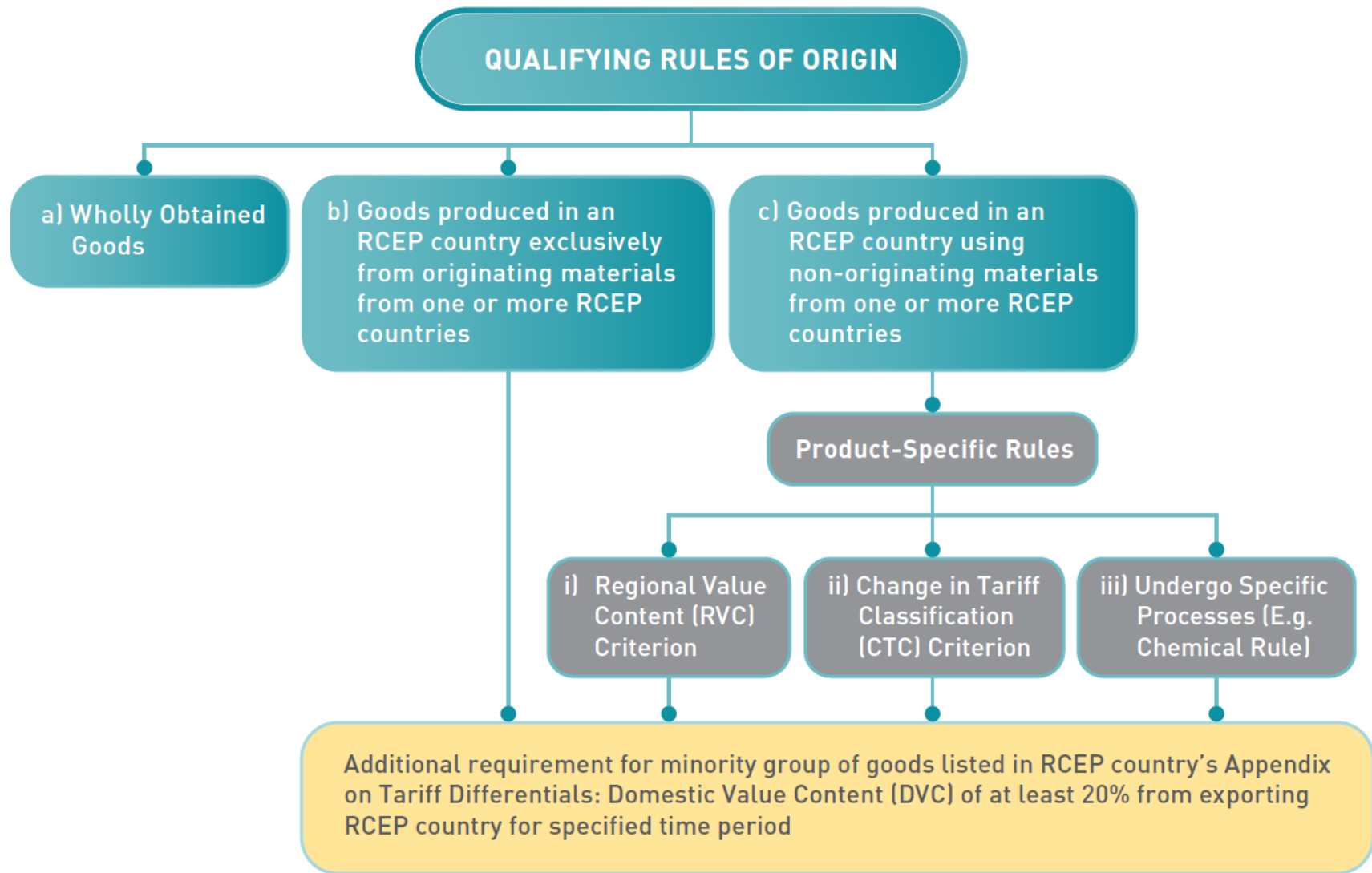


Duty-free Entry of Samples of No Commercial Value (i.e. exhibition)

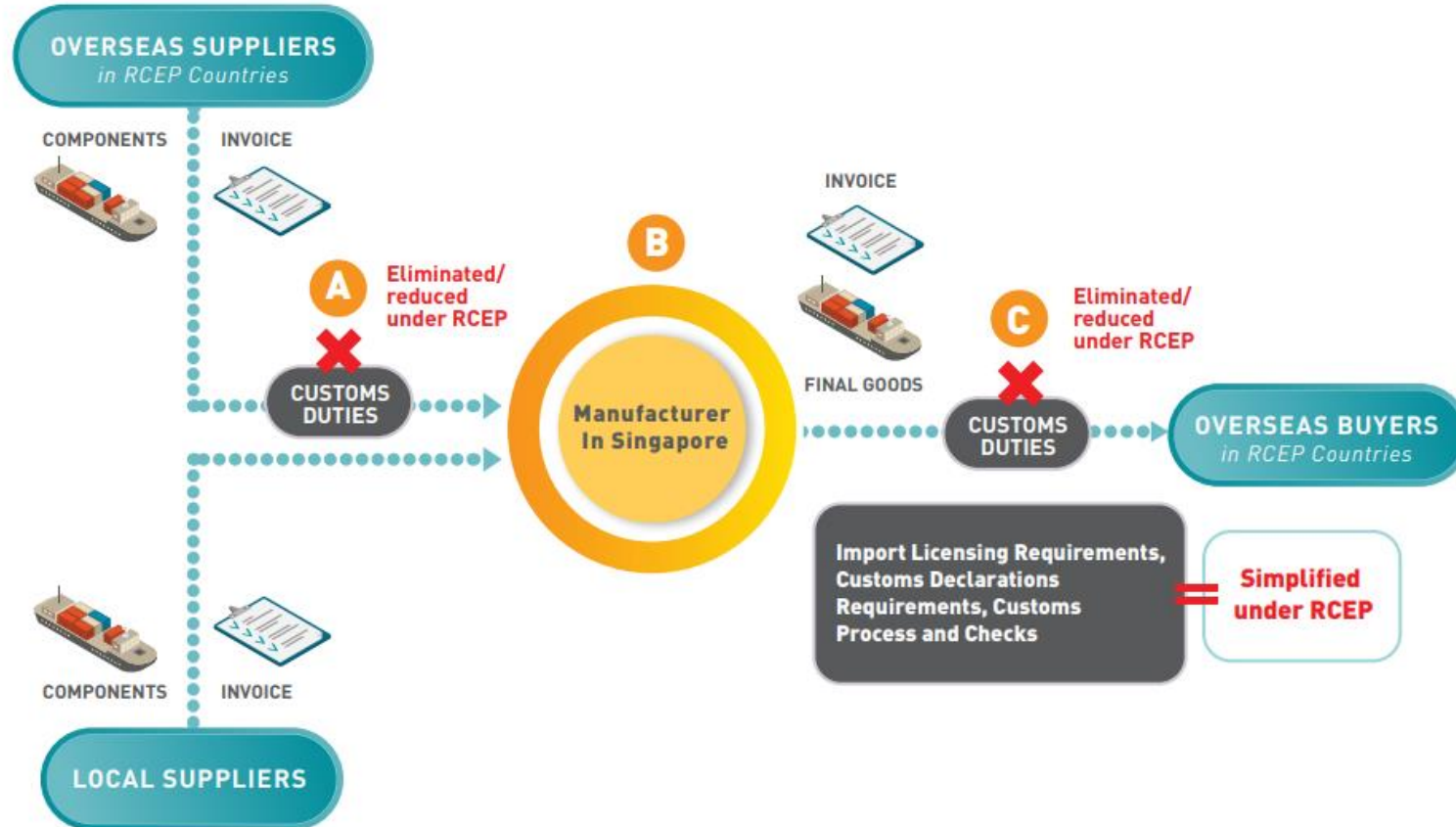
Duty-free entry to samples of no commercial value



Single Set of Rules of Origin



**IF YOU ARE A MANUFACTURER IN SINGAPORE:
RCEP SIMPLIFIES CUSTOMS PROCEDURES AND COULD HELP YOU SAVE
ON CUSTOMS DUTIES**

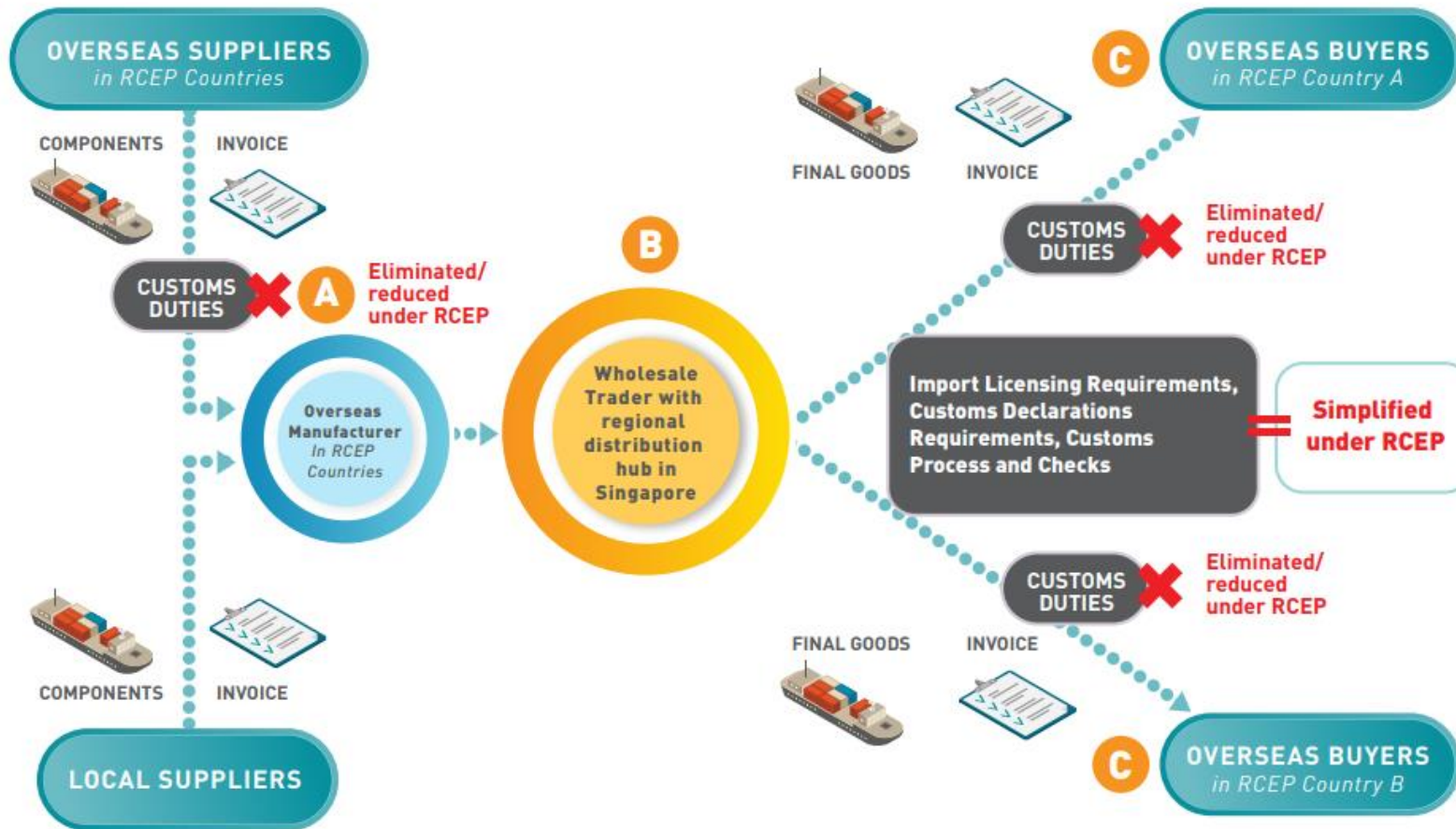


**Extracted from MTI RCEP Trade in Goods Booklet*

**IF YOU ARE A WHOLESALE TRADER IN SINGAPORE DOING "DROP SHIPPING":
RCEP SIMPLIFIES CUSTOMS PROCEDURES AND COULD HELP YOU SAVE
ON CUSTOMS DUTIES**



IF YOU ARE A WHOLESALE TRADER WITH A REGIONAL DISTRIBUTION HUB IN SINGAPORE: RCEP SIMPLIFIES CUSTOMS PROCEDURES AND COULD HELP YOU TO SAVE ON CUSTOMS DUTIES



How RCEP increases your price competitiveness for your clients

Example 1: HS Code 381121, Additives for Lubricating Oils (Containing petroleum oils or oils obtained from bituminous minerals) to Korea

Customs Duty: **5%** (Most Favored Nation)

	without FTA	RCEP	AKFTA
FTA Preferential Rate	5%	0%	5%
Export Value (A)	\$500,000		
Customs duty Payable (B)	\$25,000	\$0	\$25,000
Importer's Total Cost of Goods (A + B)	\$525,000	\$500,000	\$525,000
Tariff Savings	No savings	\$25,000	No savings

Example: Using Form RCEP

To enjoy the tariff savings:

Product HS Code 381121 must satisfy the respective FTAs rules of origin:

	38.11	Anti-knock preparations, oxidation inhibitors, gum inhibitors, viscosity improvers, anti-corrosive preparations and other prepared additives, for mineral oils (including gasoline) or for other liquids used for the same purposes as mineral oils	CTH, RVC40, or CR
--	-------	---	-------------------

Example: Using Form RCEP

To enjoy the tariff savings:

Be exported with a Form RCEP issued by Singapore Customs,

or

Declaration of Origin (DO) by Approved Exporter, (Exporters would need to be authorised as an Approved Exporter under the RCEP)



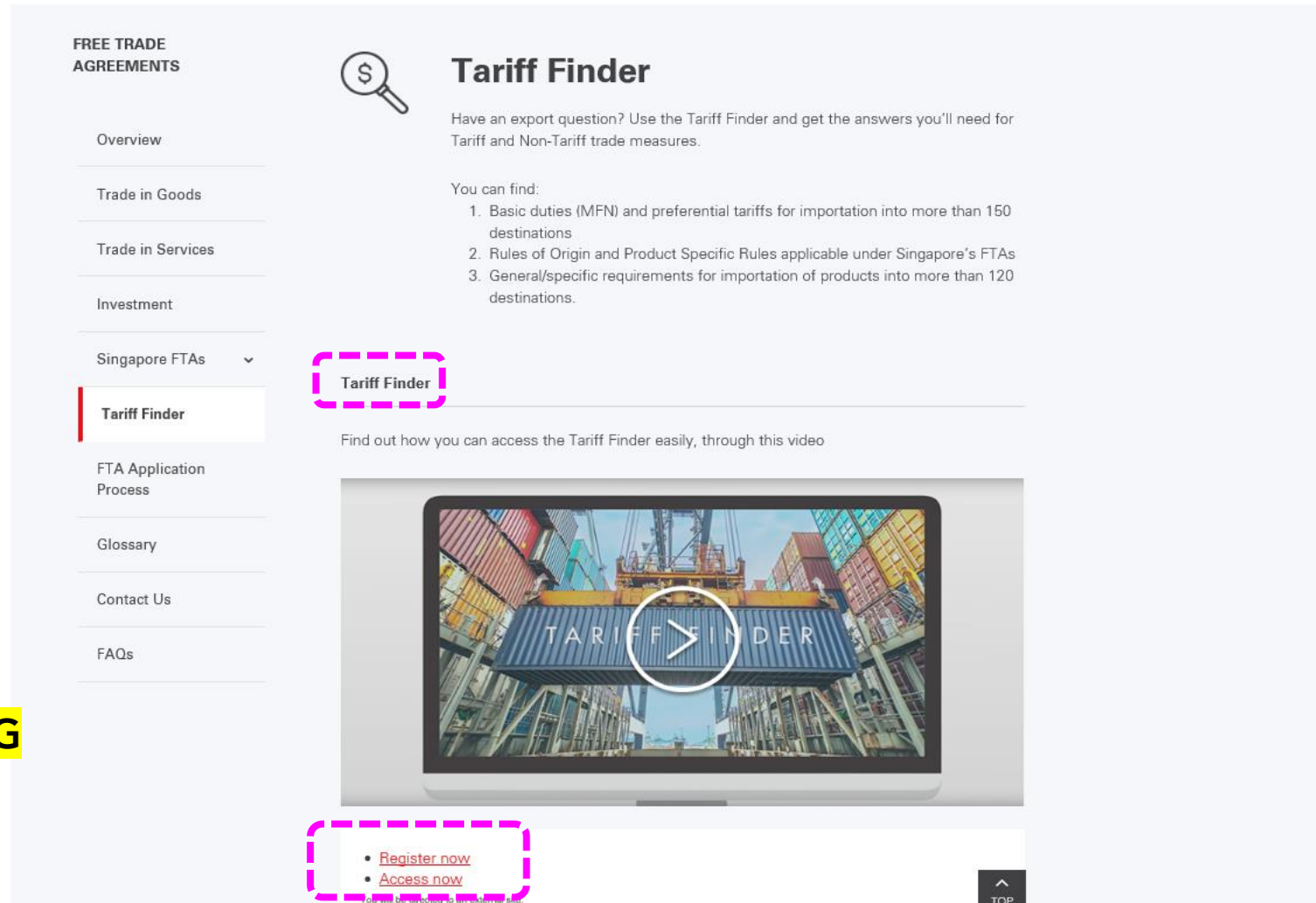
Tariff Finder

To access the Tariff Finder, navigate to the “Tariff Finder” page on www.enterprisesg.gov.sg/FTA from the left panel, or use the QR code provided.

Scan the QR code to access



<https://mendel-online.com/home#/?cid=ESG>



The screenshot shows the 'FREE TRADE AGREEMENTS' section of the website. A sidebar on the left lists various navigation options, with 'Tariff Finder' highlighted. The main content area features a search icon, the title 'Tariff Finder', and a brief description: 'Have an export question? Use the Tariff Finder and get the answers you'll need for Tariff and Non-Tariff trade measures.' Below this, a list of items found includes basic duties, rules of origin, and general requirements. A video player is embedded, showing a container yard with a 'TARIFF FINDER' sign and a play button. At the bottom, there are links for 'Register now' and 'Access now', and a 'TOP' button.

FREE TRADE AGREEMENTS

- Overview
- Trade in Goods
- Trade in Services
- Investment
- Singapore FTAs
- Tariff Finder**
- FTA Application Process
- Glossary
- Contact Us
- FAQs

Tariff Finder

Have an export question? Use the Tariff Finder and get the answers you'll need for Tariff and Non-Tariff trade measures.

You can find:

1. Basic duties (MFN) and preferential tariffs for importation into more than 150 destinations
2. Rules of Origin and Product Specific Rules applicable under Singapore's FTAs
3. General/specific requirements for importation of products into more than 120 destinations.

Tariff Finder

Find out how you can access the Tariff Finder easily, through this video

Register now
Access now

TOP

A company can register for an account to use the Tariff Finder with a corporate email address and the company's Unique Entity Number (UEN).

You can find out about your company UEN at www.uen.gov.sg

Enterprise Singapore Mendel

TARIFF FINDER

First name

Last name

E-mail

Password

Confirm password

[« Back to login](#)

Register



TARIFF FINDER Query Reports Updates Profile Tricia ▾

Address ✓

Address 2 ✓

Postal code ✓

City ✓

Country ✓

Phone ✓

Company structure ✓

Industry classification ✓

Unique Entity Number ✓

We hereby accept the [Terms and Conditions of MendelOnline](#) ✓

Fields marked with a | are required fields.

Save

Mendel Verlag | A service provided by Mendel Verlag GmbH & Co. KG | [Click for more details](#) | [Privacy Policy](#)

Once the account has been activated, log in to the Tariff Finder to start finding tariff and non-tariff information.

Query Reports Updates

Enterprise Singapore Mendel

TARIFF FINDER

Powered by [MendelOnline](#)

The Tariff Finder is a foreign trade application which provides and links extensive information on global tariff and non-tariff measures.


NOMENCLATURES	TARIFFS AND TAXES	RULES OF ORIGIN	IMPORT/EXPORT FORMALITIES
---------------	-------------------	-----------------	---------------------------

[Disclaimer](#) ⓘ

Originating country/region

Destination country/region

Product code or keyword

Query Reports Updates 




TARIFF FINDER

Powered by [MendelOnline](#)

The Tariff Finder is a foreign trade application which provides and links extensive information on global tariff and non-tariff measures.

NOMENCLATURES TARIFFS AND TAXES RULES OF ORIGIN IMPORT/EXPORT FORMALITIES

Disclaimer 

Originating country/region

Destination country/region

Product code or keyword



search

- Mendel has been managing the Tariff Finder Online Database for ESG since 2017.
- The Tariff Finder serves all Singapore based companies, within the Singapore geographical region.

Use the Tariff Finder and get the answers you'll need for Tariff and Non-Tariff trade measures.

TARIFF FINDER

Powered by [MendelOnline](#)

The Tariff Finder is a foreign trade application which provides and links extensive information on global tariff and non-tariff measures.

NOMENCLATURES

Search for product's Harmonised System (HS) code.

✓ **Reduce disparity** in opinions on HS classification of products in destination country and exporting country.

TARIFFS AND TAXES

Check Customs duties, preferential Tariffs and Taxes applicable to a specific product, and to the destination country.

✓ **Maximise benefits** from Free Trade Agreements.

RULES OF ORIGIN

Find the Rules of Origin to qualify for preferential tariffs under Free Trade Agreements.

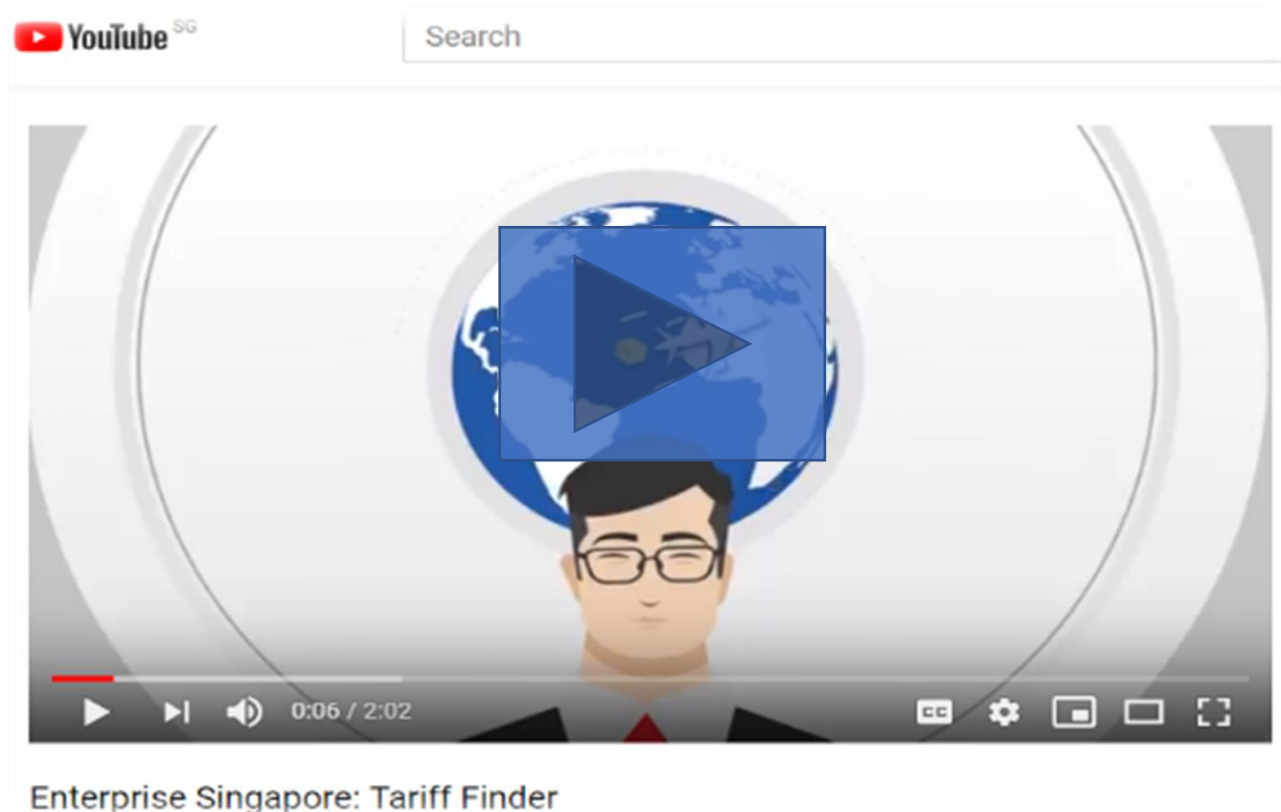
✓ **Reduce scrutiny** of product origin status by destination country's authorities.

IMPORT/EXPORT FORMALITIES

Find the import procedures and documents required for import into the destination country.

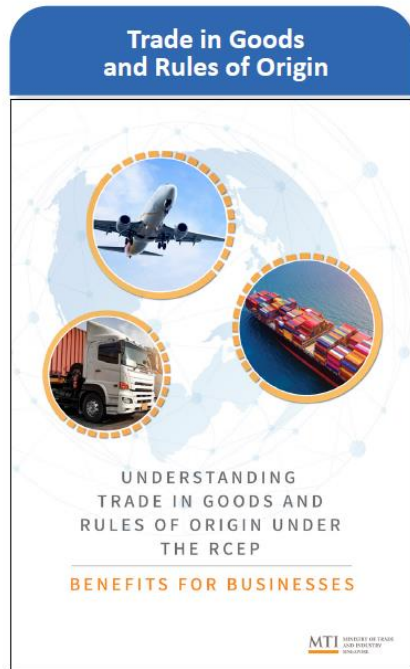
✓ **Reduce delays** in verification checks by destination country's authorities resulting in loss of preferential treatment.

View the Tariff Finder instruction video to find out how Mr. Young uses the Tariff Finder to export goods successfully from Singapore with FTAs.



Scan the QR code to watch the video.

For more information about RCEP, please refer:



<https://go.gov.sg/rcep-booklet>

- Enterprise Singapore's Tariff Finder tool:

<https://www.enterprisesg.gov.sg/non-financial-assistance/for-Singapore-companies/free-trade-agreements/ftas/tariff-finder>

- Singapore Business Federation (SBF)

<https://www.sbf.org.sg/business-expansion/fta-education-outreach>

- Handbook on rules of origin for preferential Certificates of Origin via TradeNet and related administrative matters

<https://www.customs.gov.sg/businesses/certificates-of-origin/how-to-apply-for-oco-or-pco>

- Circular on RCEP related procedures for SG-originating goods exporting to the RCEP Parties and claiming of preferential tariff treatment in SG for RCEP-originating goods (Circular 14/2021 and 15/2021)

<https://www.customs.gov.sg/news-and-media/circulars/>

SBF FTA mailing list



Scan the QR code to join SBF FTA mailing list to stay connected with the upcoming events.



Thank you.